

193 Viking Ave., Brea, CA 92821

Ph: (714) 255-1500

Fax: (714) 255-1580

Training Course Information Sheet for Attendee's

Location of TEST NDT, 193 Viking Ave. Brea, CA 92821, U.S.A.

The facility is conveniently located for airports and freeways. The most direct freeway access is to exit the 57 Freeway at the "Imperial Highway" exit (4 miles north of the 91-freeway intersection) and follow Imperial heading **west** for 1½ miles. Just after the stop light at "Berry" you will see "The Hitching Post" (RV sales) on the right hand side of the road and then the next road on the right is Viking Ave, (**look for the large red and white sign for "Viking Business Park"**). Across the road from Viking Ave. is a Church with a large statue. We are at # 193, which is approximately 200 yards on the left hand side of Viking Ave.

(If you reach the "Arovista" stop light, then you have passed Viking Ave, and will need to turn right onto "Arovista" and follow the road round and turn left on to Viking Ave.)

Course start time:

All courses start prompt at 8:00am unless otherwise stated. We suggest students arrive about 7:45am to give chance to get a coffee and settle in. There is parking at the rear of the building.

Airports

There are four airports, which serve the Orange County area.

Orange County Airport (John Wayne) approx. 25 minutes

Ontario Airport approx. 45 minutes

LAX (Los Angeles International Airport) approx. 1 hr (Expect heavy traffic).

Long Beach Airport (good, small airport) approx. 45 minutes

Where to stay

Below are some suggestions on local hotels/motels from people that attended training at TEST NDT:

Chase Suite Hotel - Brea (714) 579-3200 (Ask to speak to Estrella Cherry for our preferred rate)
3100 East Imperial Hwy
Brea, CA 92821

Ayres Suites (714) 921-8688 (Ask to speak to Lisa Burk for our preferred rate)
2267 Oakcrest Circle
Yorba Linda, CA 92887

Days Inn and Suites (714) 447-9200
333 East Imperial Hwy
Fullerton, CA 92835

You are responsible for your own hotel bill and TEST NDT will not be liable for any unpaid accounts. They accept most major Credit Cards and Company checks.



TEST NDT 2024 PREFERRED HOTEL RATES!



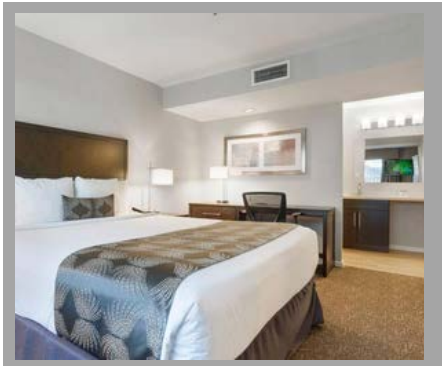
- 1 bedroom King mini Kitchen \$134.00
- 1 bedroom King full kitchen \$144.00
- 1 bedroom two Doubles \$154.00
- 2 Bedroom King/King \$234.00

Hotel Amenities

- Complimentary breakfast buffet
- Complimentary parking
- Complimentary Wi-Fi
- Complimentary access to Fitness 19
- Social reception from Monday to Thursday, including light snacks, wine & beer.

Walking Distance

- Starbucks
- PK Burgers
- Capital Noodle Bar
- Mendociono Farms
- Urban Plates
- Slap Fish
- Julep Cast Iron Kitchen + Drink
- Reborn Coffe
- Whole Foods



BOOKING RESERVATIONS

ONLINE: www.chasesuitesbrea.com
 CLIENT CODE: NDTTEST (All Caps)
 CALL THE HOTEL DIRECTLY:
 714.579.3200 ask for the Test NDT Rate.



CHASE SUITE BREA
 3100 E Imperial Hwy Brea
 CA 92821
 714.579.3200 ext. 574

Estrella Cherry Director of Sales
echerry@chasesuitehotels.com